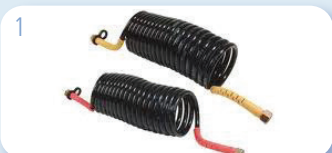
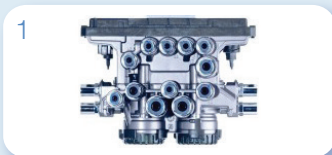




# AIR BRAKE EQUIPMENT

## HALDEX-KNORR-WABCO

- 1 ABS, EBS UNITS
- 2 ABS, EBS SENSORS
- 3 COMPRESSORS
- 4 CALIPERS
- 5 CALIPERS REPAIR KITS
- 6 BRAKE PADS
- 7 DISCS
- 8 AIR DRYERS / AIR PROCESSORS
- 9 LEVELLING VALVES, RAISE LOWER, COLAS ETC ETC
- 10 SLACK ADJUSTERS
- 11 CLUTCH SERVO
- 12 FOOT VALVES
- 13 MULTI CIRCUIT VALVE
- 14 BRAKE CHAMBERS



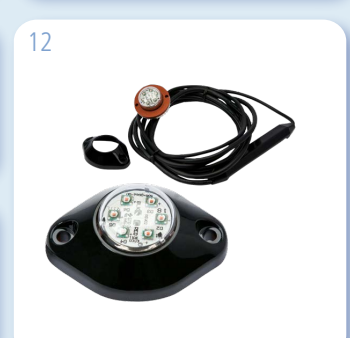
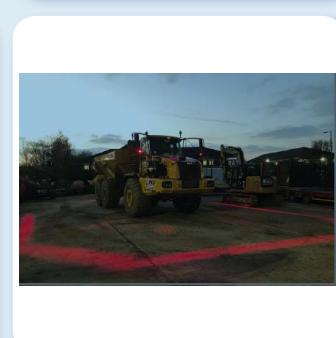
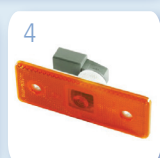
# AIR BRAKE FITTINGS & ANCILLARY ITEMS

- 1 SUSI COILS AND ADAPTORS
- 2 AIR TANKS
- 3 NYLON PIPE 4-18MM
- 4 TAPS
- 5 STUD, ELBOW, JOINER QUICK FIT
- 6 TRACTOR-TRAILER COUPLINGS
- 7 AIR TANKS
- 8 TEST GAUGES



# LED LIGHTS

- 1 TAILLIGHTS
- 2 BEACONS
- 3 WORK-LIGHTS
- 4 MARKERS
- 5 INTERIOR LIGHTING
- 6 STROBES
- 7 LICENCE PLATE LIGHT
- 8 BULBS
- 9 INSPECTION LIGHTS
- 10 OUTLINE MARKERS
- 11 RECHARGABLE BATTERY STROBES
- 12 HEADLIGHT STROBES
- 13 DASH STROBE
- 14 LED RUNNING LIGHTS



# LIGHTBARS, BEACONS, TAILLIGHTS & WORKLIGHTS



- 1 LIGHTBARS LED-XENON-ROTATING
- 2 BEACONS LED-XENON-ROTATING
- 3 TAILLIGHTS
- 4 WORK LIGHTS
- 5 HEAD LIGHTS
- 6 REMOTE SEARCH LIGHT



# CCTV, DVR & REVERSING ALARMS

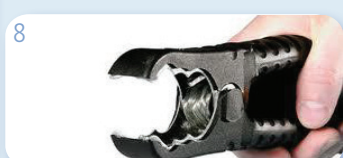
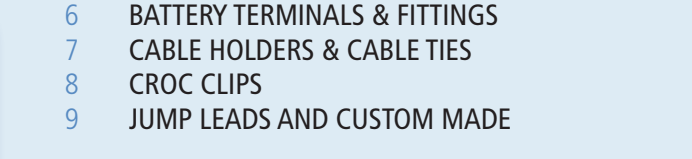
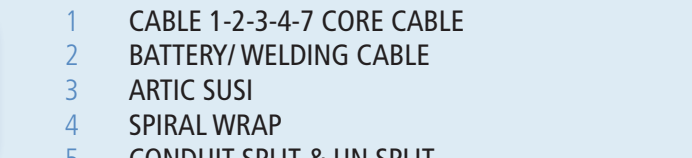
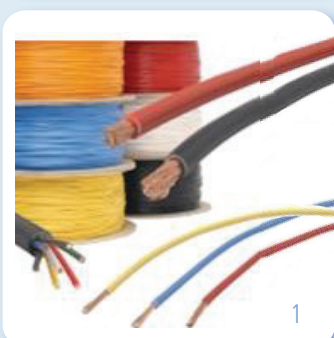
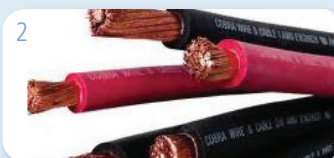
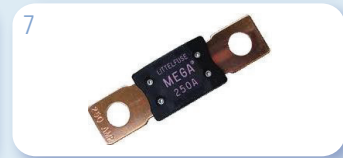
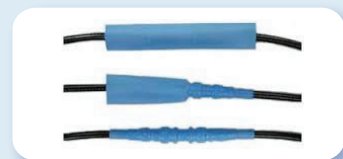
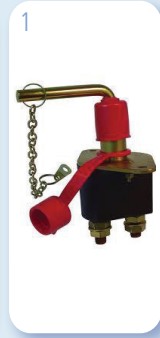
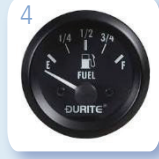


- 1 CCTV KITS CABLE & WIRELESS
- 2 DVR'S
- 3 SMART EYE
- 4 SPLITTER BOXES
- 5 BULLET-SIDE CAMERAS REVERSING
- 6 ALARMS
- 7 WHITE SOUND REVERSING ALARMS
- 8 PARKING SENSORS
- 9 SIDE SENSORS
- 10 Wi Fi Camera Iphone/ Samsung





# AUTO ELECTRICAL EQUIPMENT



# CABLE, CONDUIT

- 1 CABLE 1-2-3-4-7 CORE CABLE
- 2 BATTERY/ WELDING CABLE
- 3 ARTIC SUSI
- 4 SPIRAL WRAP
- 5 CONDUIT SPLIT & UN SPLIT
- 6 BATTERY TERMINALS & FITTINGS
- 7 CABLE HOLDERS & CABLE TIES
- 8 CROC CLIPS
- 9 JUMP LEADS AND CUSTOM MADE



# EXHAUST

- 1 SIZES 2" TO 6" +
- 2 SILENCERS
- 3 STACK SYSTEMS
- 4 FLEXIBLE TUBING SS & GALVANISED
- 5 TUBE SS & GALVANISED
- 6 BENDS 90 & 45 DEG & OTHERS
- 7 RAIN CAPS
- 8 EXHAUST WRAP & SEALING PUTTY
- 9



5



4



6



9



4



2



8



7



2



8



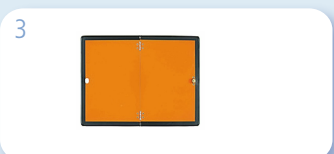
1

# MARKINGS

- 1 ECE 3M CONSPICUITY TAPE AMBER-RED-WHITE
- 2 ECE 3M CURTAIN SIDER & OIL TANKER TAPE Ad
- 3 MARKINGS BOARDS
- 4 LONG VEHICLE –WIDE LOAD SIGNS
- 5 ADR EQUIPMENT



4



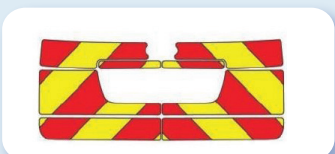
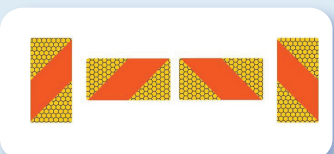
3



2



3



1



5



## MIRRORS

- 1 TRUCK MIRRORS
- 2 BLIND SPOT
- 3 FRONT MIRRORS

4



6



4



1



## SOME OTHER ITEMS

- 1 BUFFER & ROLLER
- 2 TWIST LOCKS
- 3 MUDFLAPS

1



2



5



## LADDER RACKS - ROOF RACKS - HANDWASH UNITS

- 1 LADDER RACKS
- 2 ROOF RACKS
- 3 ROOF BARS
- 4 VAN SHELVEING
- 5 HANDWASH UNITS

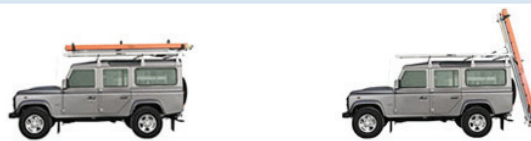
1



4



1



5







**WABCO**



**KNORR  
BREMSE**



**DURITE**



**masterack**  
COMMERCIAL VEHICLE EQUIPMENT

*Leggett & Platt*  
Commercial Vehicle Products

*Rubbolite*  
FLEXIBLE LAMPS LTD

**TEXTAR**

**STERLING  
POWER**



**PREMIER  
HAZARD**

*Cobra*



**KONI**



**BRIGADE**

**WALKER**  
EXHAUST SYSTEMS

**DRL  
DAVID REES LTD**

103 ASHBOURNE IND EST., ASHBOURNE,  
Co Meath, A84 WK37 Ireland.

T: 01-8351944

F: 01-8351754

E: sales@drl-irl.com

W: www.drl-irl.com



QUALITY

I.S. EN ISO 9001:2008

**NSAI Certified**



HEALTH  
& SAFETY

OHSAS 18001:2007

**NSAI Certified**